



Alexandra Court  
Moscow Road W2

 Maskells

---

## Elegant Three-Bedroom Apartment in Prime Bayswater Location



### Accommodation and Amenities

- THREE DOUBLE BEDROOMS
- PORTERED BUILDING
- LIFT
- CLOSE TO HYDE PARK

---

Occupying the top floor of an attractive, well-maintained building with recently refurbished communal areas, this beautifully presented lateral apartment offers 1,376 sq ft (127.9 sqm) of bright and spacious living accommodation.

The apartment comprises three generously sized bedrooms, including a principal bedroom with en suite bathroom, an additional family bathroom, and a large dual-aspect reception and dining room perfect for entertaining. A separate modern kitchen complements the living space.

Residents benefit from a porter, lift access, and parking, adding further convenience to this already superb offering.

Ideally located on Moscow Road, the property is moments from the expansive green spaces of Hyde Park and within walking distance to the excellent local amenities of Bayswater, Notting Hill Gate, and Westbourne Grove. Excellent transport links are close by, including Queensway (Central Line) and Bayswater (Circle & District Lines), along with easy access to the exciting Whiteleys redevelopment project.

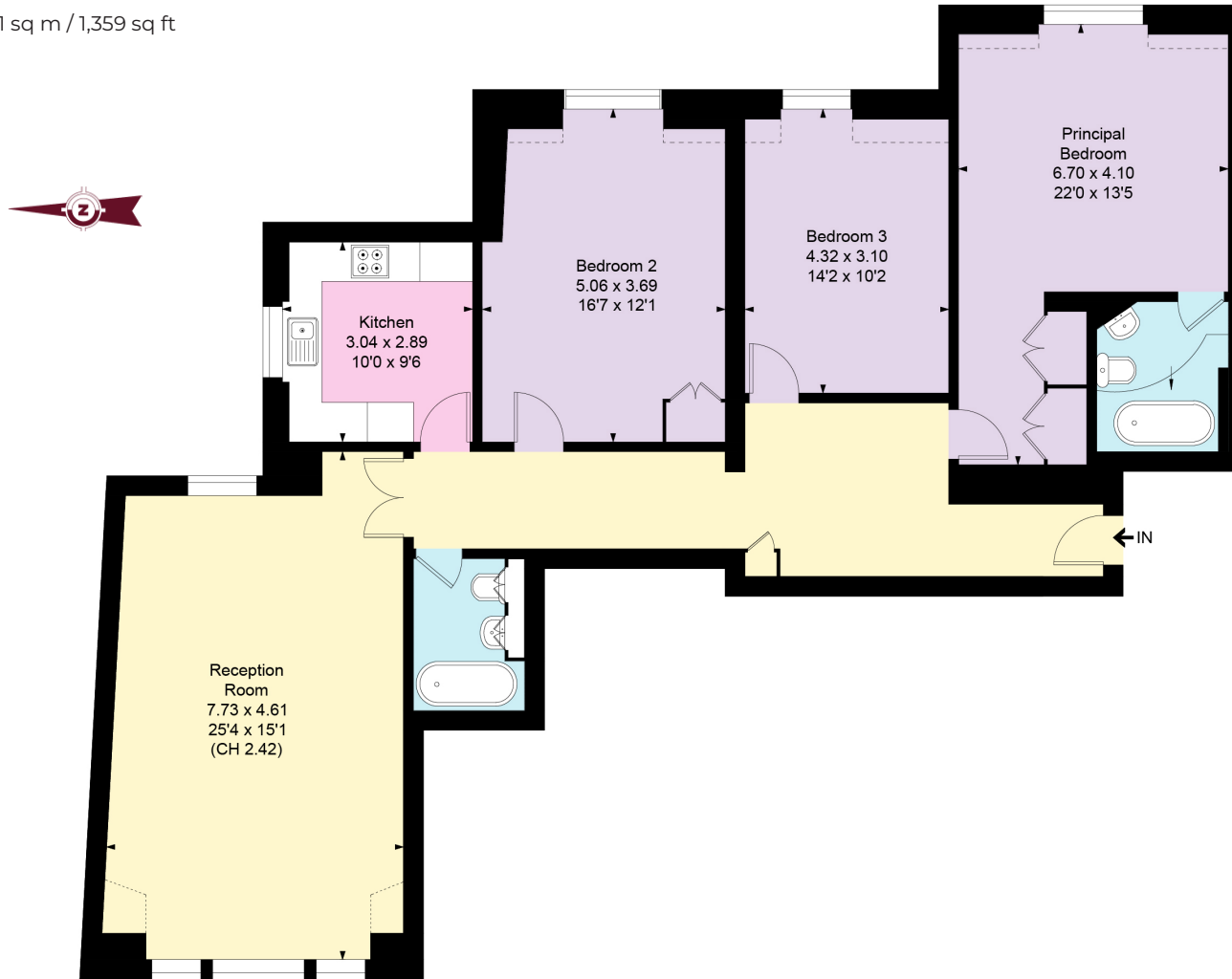
The property is offered on a long lease and sits within Council Tax Band H.

---



## APPROXIMATE FLOOR AREA

126.31 sq m / 1,359 sq ft



Fifth Floor

## TERMS

**Asking Price** £1,350,000

**Tenure** Leasehold - 87 years remaining, expires 25/12/2113

**Service Charge** £8,640 PA

**Ground Rent** £600 PA

**EPC** D

**Council Tax Band** H

**Local Authority** City of Westminster

*Let's talk Mortgages*

Maskells has partnered with CBM Financial, an independent mortgage broker, directly authorised with specialist knowledge and whole of market access.

**CLICK HERE**

[mortgages@maskells.com](mailto:mortgages@maskells.com)

Your home may be repossessed if you do not keep up repayments on your mortgage



@maskellsea

# Maskells

105 Kensington Church Street,  
London W8 7LN  
Tel: 0207 887 2532  
[sales@maskells.com](mailto:sales@maskells.com)  
[lettings@maskells.com](mailto:lettings@maskells.com)

[maskells.com](https://www.maskells.com)